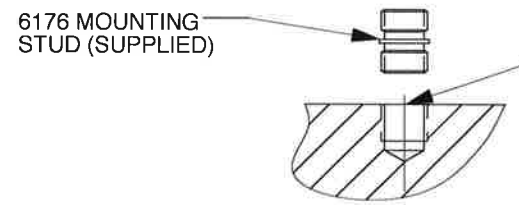
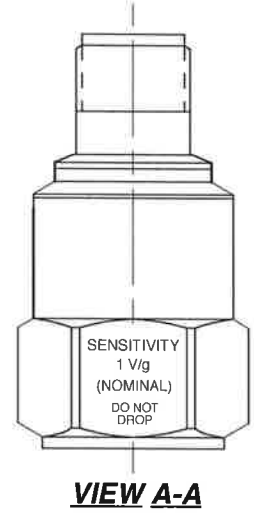
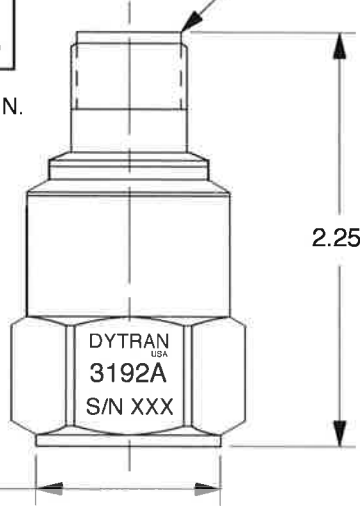
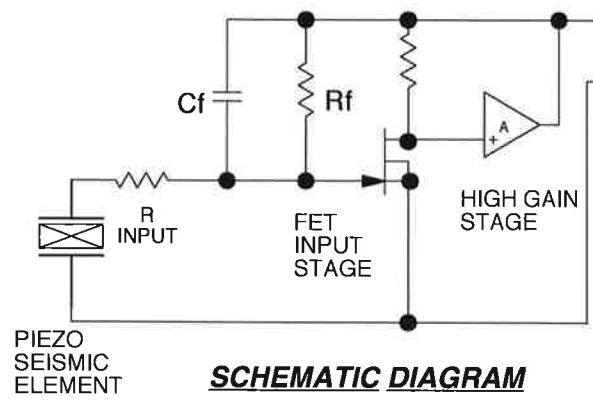
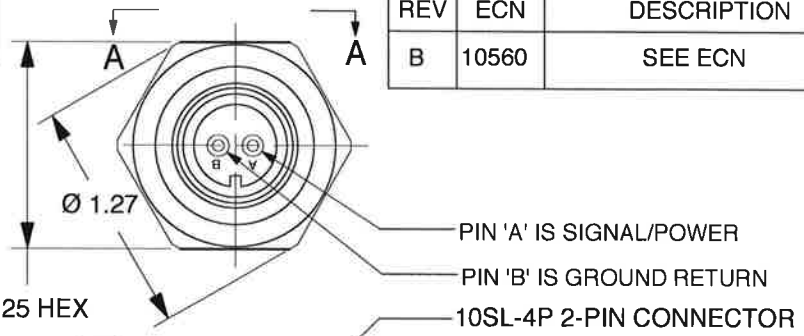


**DYTRAN PROPRIETARY AND CONFIDENTIAL**  
 THE INFORMATION CONTAINED IN THIS DRAWING IS THE SOLE PROPERTY OF  
 DYTRAN INSTRUMENTS, INC. AND ANY REPRODUCTION IN PART OR AS A  
 WHOLE OR ANY OTHER DISSEMINATION OF THIS INFORMATION WITHOUT THE  
 WRITTEN PERMISSION OF DYTRAN INSTRUMENTS, INC. IS PROHIBITED.

REV	ECN	DESCRIPTION	BY/DATE	CHK	APPR
B	10560	SEE ECN	RLA 02/26/14	AS	EP



**MOUNTING PREPARATION**  
 PREPARE SURFACE Ø1.05, FLAT TO .001 TIR.  
 DRILL #3 (Ø.213) X .250 DEEP  
 BOTTOM TAP 1/4-28 UNF-2B X .200 MIN THREAD DEPTH

NOTES: UNLESS OTHERWISE SPECIFIED

USED ON	NEXT ASSY	UNLESS OTHERWISE SPECIFIED: INTERPRET DIM & TOL PER ASME Y14.5M-1994 REMOVE BURRS COUNTERSINKS INTERNAL THDS 90° TO MAJOR DIA CHAM EXT THDS 45° TO MAJOR DIA THD LENGTHS AND DEPTHS ARE FOR THDS PER MIL-S- 7742. DIMENSIONS APPLY AFTER FINISHING.
APPLICATION		
THIRD ANGLE PROJECTION USA		ALL MACHINED SURFACES <sup>63</sup> / <sub>✓</sub> TOTAL RUNOUT WITHIN .005 BREAK SHARP EDGES .005 TO .010 MACHINE FILLET RADI .005 TO .015. WELDING SYMBOLS PER AWS A2.4 ABBREVIATIONS PER MIL-STD-12

CONTRACT NO		
UNLESS OTHERWISE SPECIFIED DIMENSIONS ARE IN INCHES. DIMENSION IN BRACKETS [ ] ARE IN MILLIMETERS. TOLERANCES ARE:		
INCHES XX ± .03 .XXX ± .010	METRIC .X ± 0.8 .XX ± 0.25	ANGLES ± 1°
FINISH		
DO NOT SCALE DRAWING		

		<b>MASTER</b> ONLY IF IN RED CHATSWORTH, CA.	
SCALE 2X	DESIGN NC	DATE 10-10-07	SEE REV BLK
DRAWN NC	DATE 3/24/98	PART NO.	
CHECKED R.A.	DATE 8/06/02	MAT'L	REV B
APPROVED NC	DATE 8/06/02	NEXT ASSEMBLY	USED ON
TITLE <b>OUTLINE/INSTALLATION DRAWING, MODEL 3192A</b>			DWG NO. <b>127-3192A</b>
			SHEET 1 OF 1

<b>Model Number</b> 3192A	<b>PERFORMANCE SPECIFICATION</b>			<b>DOC NO</b> PS3192A
	<b>SINGLE AXIS IEPE ACCELEROMETER</b>			REV C, ECN 9493, 12/06/10



- HIGH SENSITIVITY
- HERMETICALLY SEALED
- EXCELLENT LINEARITY

	ENGLISH		SI	
<b>PHYSICAL</b>				
Weight	6.65	oz	190.0	grams
Size	1.125 x 2.25	Inches	28.57 x 57.15	mm
Connector	10SL-4P		10SL-4P	
Mounting Provision : Tapped Hole	1/4-28 x .250 deep		1/4-28 x .250 deep	
Material : Base, Cap and Connector	304L		304L	
Element Style	Ceramic		Ceramic	
	Planar Shear		Planar Shear	
<b>PERFORMANCE</b>				
Sensitivity, ±5% [1]	1	V/g	0.10	V/m/s <sup>2</sup>
Range F.S for ± 5 Volts Output	±5	g's	±49	m/s <sup>2</sup>
Frequency Range, ±5%	0.5 to 1000	Hz	0.5 to 1000	Hz
Resonant Frequency, Nominal	12	kHz	12	kHz
Equivalent Electrical Noise Floor	0.000036	grms	0.000035	m/s <sup>2</sup> rms
Spectral Noise				
1Hz	4.0	µgrms/v(Hz)	39.24	µm/s <sup>2</sup> rms/v(Hz)
10Hz	8.1	µgrms/v(Hz)	79.46	µm/s <sup>2</sup> rms/v(Hz)
100Hz	0.5	µgrms/v(Hz)	4.91	µm/s <sup>2</sup> rms/v(Hz)
1000Hz	0.36	µgrms/v(Hz)	3.53	µm/s <sup>2</sup> rms/v(Hz)
Linearity [3]	± 2%	% F.S.	± 2%	% F.S.
Maximum Transverse sensitivity	5	%	5	%
Strain Sensitivity	0.005	g/µε	0.05	m/s <sup>2</sup> /µε
<b>ENVIRONMENTAL</b>				
Maximum Vibration	±50	gpeak	±490	m/s <sup>2</sup> peak
Maximum Shock	±100	gpeak	±981	m/s <sup>2</sup> peak
Temperature Range	-60 to +250	°F	-51 to 121	°C
Seal, Hermetic	Glass-to-metal/Welded		Glass-to-metal/Welded	
<b>ELECTRICAL</b>				
Supply Current Range [4]	2 to 20	mA	2 to 20	mA
Compliance Voltage Range	+ 18 to +30	Volts	+18 to +30	Volts
Output Impedence, Typ	100	Ω	100	Ω
Bias Voltage	+11 to +13	VDC	+11 to +13	VDC
Discharge Time Constant	0.8 to 2.0	Sec	0.8 to 2.0	Sec
Output Signal Polarity for Acceleration Towards Top	Positive		Positive	
Electrical Isolation, Case Ground To Mounting Surface	10	GΩ, min	10	GΩ, min

This family also includes:

Model	Sensitivity (mV/g)	Range F.S ± 5 Volts (G's)	Max Vibration/Shock(± Gpeak)	Resonant Frequency (kHz)

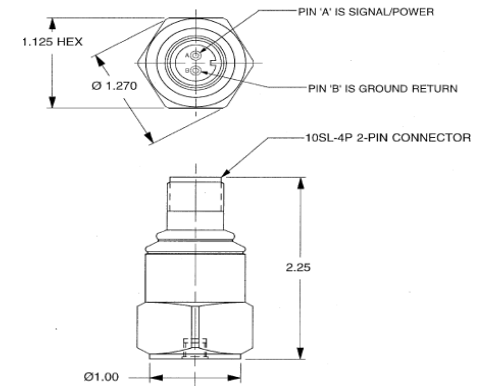
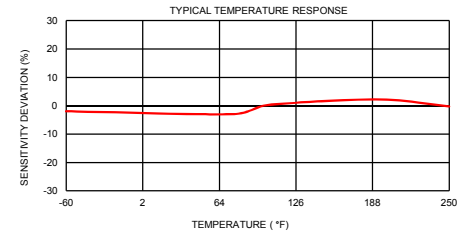
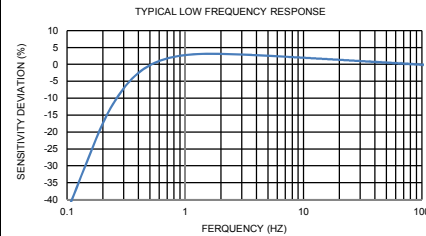
Please refer to the performance specifications of the products in this family for detailed description

**Supplied Accessories:**

- 1) Accredited calibration certificate (ISO 17025)
- 2) Model 6176 mounting stud, Qty 1

**Notes:**

- [1] Measure at 100Hz, 1 Grms per ISA RP 37.2
- [2] Measure using zero-based straight line method, % of F.S. or any lesser range
- [3] Do not apply power to this system without current limiting, 20 mA MAX. To do so will destroy the IC charge amplifier



Units on the line drawing are in inches, units in brackets are in millimeters. Refer to 127-3192A for more information.



21592 Marilla Street, Chatsworth, California 91311 Phone: 818.700.7818 Fax: 818.700.7880 www.dytran.com  
For permission to reprint this content, please contact info@dytran.com