

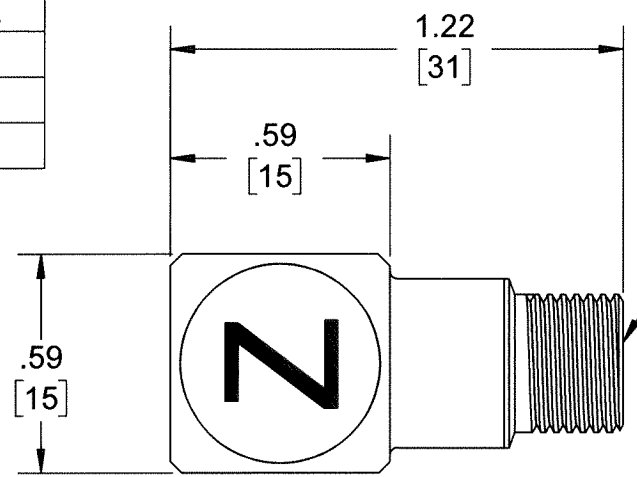
PROPRIETARY AND CONFIDENTIAL

THE INFORMATION CONTAINED IN THIS DRAWING IS THE SOLE PROPERTY OF DYTRAN INSTRUMENTS INC. ANY REPRODUCTION IN PART OR AS A WHOLE WITHOUT THE WRITTEN PERMISSION OF DYTRAN INSTRUMENTS INC. IS PROHIBITED

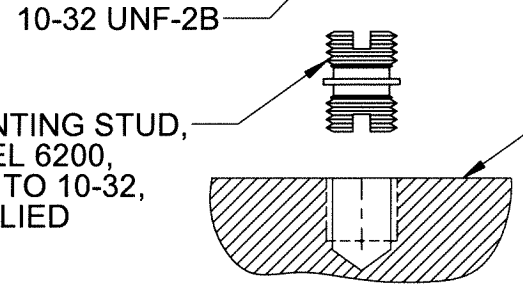
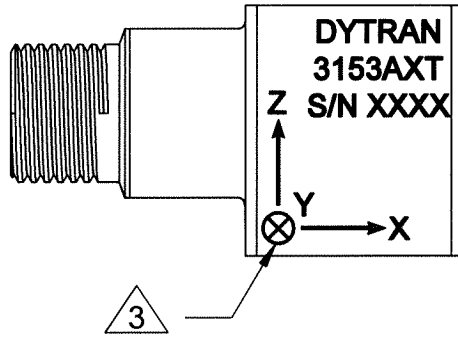
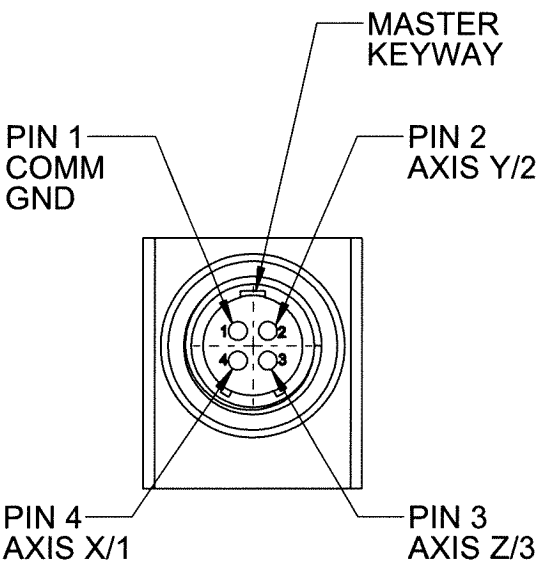
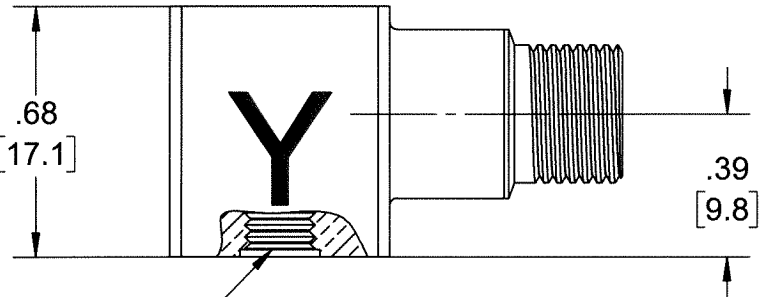
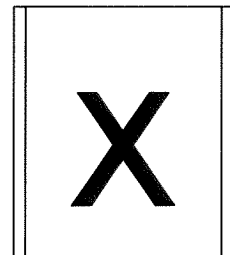
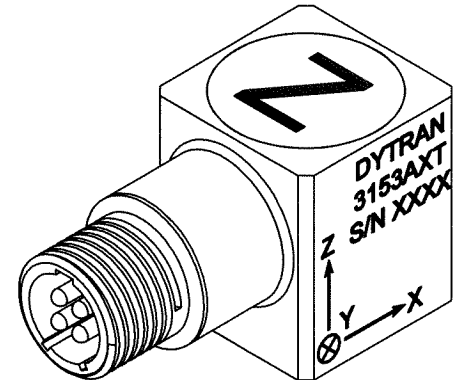
REVISIONS

REV.	ECN	DESCRIPTION	BY/DATE	CHK	APPR
A	12222	INITIAL RELEASE	NDC 09/29/15	LN	RT
B	14935	ADDED NOTE 5	KG 03/01/19	DA	M4

MODEL	SENSITIVITY	RANGE
3153A1T	10 mV/g	±500 g
3153A2T	50 mV/g	±100 g
3153A3T	100 mV/g	±50 g



CONNECTOR, 4-PIN, 3/8-28 UN-2A GLENAIR P/N: 800-013-03Z16-4PN 4



MOUNTING STUD, MODEL 6200, 10-32 TO 10-32, SUPPLIED

MOUNTING RECOMMENDATION: PREPARE A .55 [14] X .55 [14] MIN SURFACE, FLAT TO .001 TIR. TAP 10-32 UNF-2B ∇.15 [3.8] MIN. MOUNTING TORQUE: 10-12 Lb-in.

5. MINOR VOIDS, SCARS, SCRATCHES, AND MOUNTING BLEMISH / WITNESS MARKS ON EXTERIOR SURFACES ARE ALLOWED DUE TO RESTRAINING AND HANDLING DURING TESTING, TRANSPORT OR PROCESSING. THESE APPEAR AS INDICATORS THAT DO NOT AFFECT FORM, FIT OR FUNCTION AS INTENDED BY DESIGN OR APPLICATION.

4 MATES WITH DYTRAN CABLES: 6390AXX (4-PIN TO 3 10-32 PLUGS) 6669AXX (4-PIN TO FLYING LEADS) ("XX" DENOTES LENGTH IN FEET)

3 ARROWS INDICATE DIRECTIONS OF ACCELERATION FOR POSITIVE OUTPUT

2. WEIGHT: 35 GRAMS, MAX.

1. ENVIRONMENTAL SEAL: HERMETIC

NOTES: UNLESS OTHERWISE SPECIFIED

UNLESS OTHERWISE SPECIFIED: INTERPRET DIM & TOL PER ASME Y14.5M - 1994. REMOVE BURRS. COUNTERSINK INTERNAL THDS 90° TO MAJOR DIA. CHAM EXT THDS 45° TO MINOR DIA. THD LENGTHS AND DEPTHS ARE FOR MIN FULL THDS. DIMENSIONS APPLY AFTER FINISHING.		UNLESS OTHERWISE SPECIFIED: DIMENSIONS ARE IN INCHES DIMENSIONS IN BRACKETS [ ] ARE IN MILLIMETERS TOLERANCES ARE: DECIMALS METRIC ANGLES .XX ±.03 X ± 0.8 ° ±1° .XXX ±.010 .XX ±0.25	
APPROVALS		DATE	
ORIG	LN	09/03/15	
CHK	LN	10/02/15	
APP	RT	10/08/15	
DO NOT SCALE DRAWING		THIRD ANGLE PROJECTION USA	

**DYTRAN INSTRUMENTS, INC.** Chatsworth, CA

**MASTER ONLY IN RED**

TITLE: **OUTLINE/ INSTALLATION DRAWING, 3153AT SERIES**

SIZE <b>B</b>	CAGE CODE <b>2W033</b>	DWG NO <b>127-3153A1T</b>	REV <b>B</b>
---------------	------------------------	---------------------------	--------------

SCALE: 2:1 SHEET 1 OF 1

MODEL NUMBER <b>3153A3T</b>	<b>PERFORMANCE SPECIFICATION</b>	DOC NO.
		<b>PS3153A3T</b>
	<b>Accelerometer, Triaxial, IEPE</b>	REV C, ECN 15508, 01/13/2020



- **HERMETICALLY SEALED**
- **STUD MOUNTED**
- **TEDS FEATURE**
- **GROUND ISOLATED**

**PHYSICAL**

Weight, Max  
Connector [1]  
Housing Material  
Sensing Element  
Mounting Provision

	ENGLISH		SI	
Type	4-pin, 3/8-28	oz	4-pin, 3/8-28	grams
Material	300 Series S.S.		300 Series S.S.	
Mode	300 Series S.S.		300 Series S.S.	
	Ceramic		Ceramic	
	Shear		Shear	
	10-32 Tapped Hole		10-32 Tapped Hole	

**PERFORMANCE**

Sensitivity, +15-10% [2]	100	mV/g	10.2	mV/m/s <sup>2</sup>
Acceleration Range	± 50	Gpeak	±491	m/s <sup>2</sup> peak
Frequency Range, ±5%	0.7 - 5000	Hz	0.7 - 5000	Hz
Resonance Frequency	>20	kHz	>20	kHz
Linearity [3]	1	%F.S.	1	%F.S.
Transverse Sensitivity Max	6	%	6	%
Electrical Noise Floor, Max.	0.0003	Grms	0.003	m/s <sup>2</sup> rms

**ELECTRICAL**

Supply Current Range [4]	2 to 20	mA	2 to 20	mA
Compliance Voltage Range	+18 to +30	VDC	+18 to +30	VDC
Output Impedance, Typ.	100	Ω	100	Ω
Output Bias Voltage	11 - 13	VDC	11 - 13	VDC
Discharge Time Constant	0.5 to 1.5	sec	0.5 to 1.5	sec
TEDS Feature	IEEE 1451.4		IEEE 1451.4	

**ENVIRONMENTAL**

Shock Max	± 1000	g pk	± 9810	m/s <sup>2</sup>
Vibration Max	± 250	g pk	± 2453	m/s <sup>2</sup>
Operating Temperature	-60 to +250	°F	-51 to +121	°C
TEDS Operating Temperature	-40 to +185	°F	-40 to +85	°C
Seal	Hermetic		Hermetic	
Magnetic Sensitivity at 100 Gauss	0.00007	g/Gauss	0.0006867	m/s <sup>2</sup> /Gauss
Base Strain Sensitivity	0.05	g/με	0.4905	m/s <sup>2</sup> /με
Electrical Isolation	10	MΩ	10	MΩ

**This family also includes:**

Model	Sensitivity (mV/g)	Range (Gpeak)	Resolution (Grms)	Oper. Temp(°F)	TC (sec)
3153A1T	10	500	0.003	-60 to +250	0.5 to 1.5
3153A2T	50	100	0.0006	-60 to +250	0.5 to 1.5

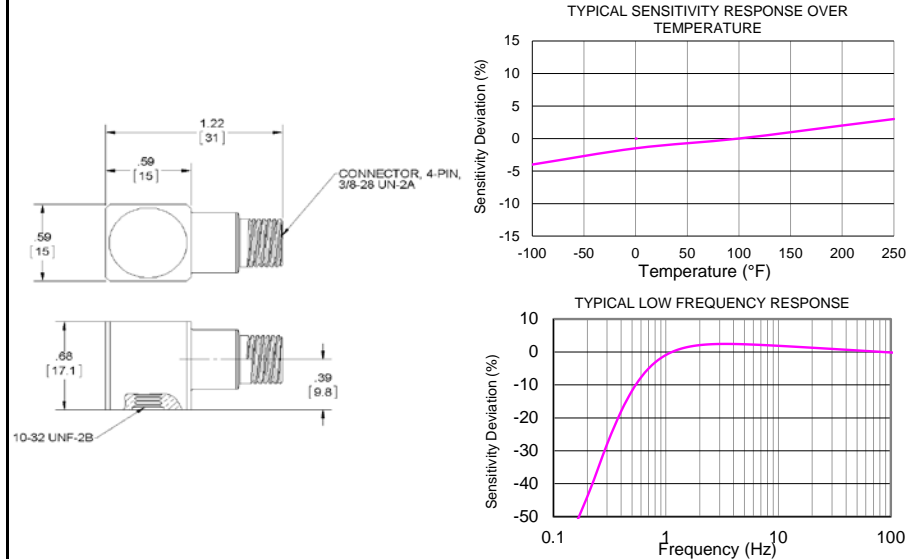
Refer to the performance specifications of the products in this family for detailed description

**Supplied Accessories:**

- 1) Model 6200 Mounting Stud
- 2) Accredited Calibration Certificate (ISO 17025)

**Notes:**

- [1] Glass to Metal Seal connector. Mates with Dytran cable Model 6390AXX, 6381AXX, 6380AXX, & 60042AXX (XX=length in feet)
- [2] Measured At 100 Hz, 1 Grms per ISA RP 37.2
- [3] Linearity is % of specified full scale (or any less full-scale range), zero-based best fit straight line method.
- [4] Do not apply power to this device without current limiting, 20mA Max, to do so will destroy the integral IC amplifier
- [5] In the interest of constant product improvement, we reserve the rights to change the specifications without notice. It is the customer's responsibility to validate that a particular product with the properties described in the product specification is suitable for use in a particular application. Parameters provided in datasheets and / or specifications may vary in different applications and performance may vary overtime. All operating parameters, including typical parameters, must be validated for each customer application by the customer's technical experts.



Units on the line drawing are in inches, units in brackets are in millimeters. Refer to 127-3153A1T for more information.



21592 Marilla Street, Chatsworth, California 91311 Phone: 818.700.7818 Fax:818.700.7880 www.dytran.com For permission to reprint this content, please contact info@dytran.com