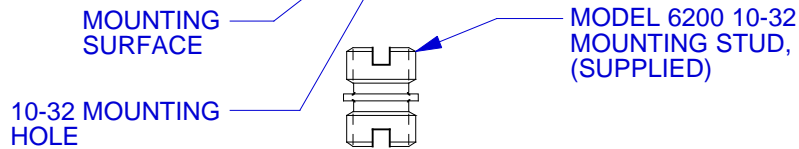
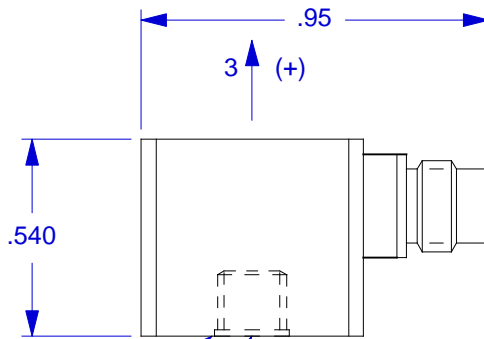
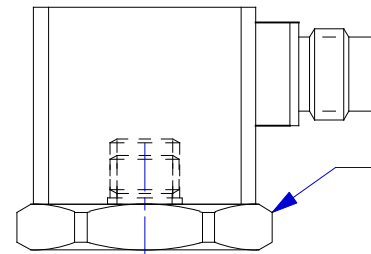


**VIEW LOOKING INTO CONNECTOR**

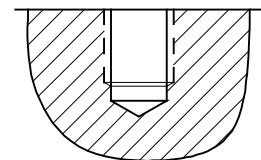
**PINOUT**  
 PIN #1 SIG/PWR AXIS 1 (X)  
 PIN #2 SIG/PWR AXIS 2 (Y)  
 PIN #3 SIG/PWR AXIS 3 (Z)  
 PIN #4 GND RETURN, COMMON



CONNECTOR MATES WITH DYTRAN CABLE 6430AXX



**SUGGESTED MOUNTING METHOD:**  
 THREAD MODEL 6213 ADAPTOR INTO 3093A1 HOUSING. ADHESIVE MOUNT TO TEST SURFACE, (NO 10-32 PORT NEEDED)



**MOUNTING PORT PREPARATION:**  
 SELECT SURFACE FLAT TO .001 TIR  
 DRILL #21 (.159) DIA. X .250 DEEP  
 BOTTOM TAP 10-32 UNF-2B X .200 MIN. DEPTH PERF. THD.

4. MOUNTING TORQUE ON HEX FLATS OF 6213 ADAPTOR: 10 TO 15 LB-INCHES. DO NOT OVERTORQUE.
3. SIGNAL POLARITY IS POSITIVE FOR ACCELERATION IN THE DIRECTION OF AXES ARROWS.
2. SIG/PWR GROUND IS ISOLATED FROM CASE, 10 MEGOHMS, MIN.
1. ENVIRONMENTSL SEAL: HERMETIC.

EXCEPT AS OTHERWISE NOTED	
ALL DIMENSIONS IN INCHES TOLERANCE: .XXX = ± .XX = ±	
SURFACE FINISH EXCEPT AS NOTED	✓
BREAK EDGES TO DEBURR RADIUS OR CHAMFER	
△ THESE DIAS ⊙ TO	T.I.R.
FILLETS -	MAX RAD.



CHATSWORTH, CA.

SCALE	2X	REV	-	DATE	-	ECN	-
DATE	6/22/00	PART NO.		MODEL 3093B1			
DRAWN	N.C.	CHECKED	R.A.	MAT'L			
APPROVED	NEXT ASSEMBLY			USED ON	3093B1		
TITLE				DWG NO.			
OUTLINE/INSTALLATION DRAWING, MODEL 3093B1				127-3093B1			
				SHEET 1		OF 1	

<b>Model Number</b>	<b>PERFORMANCE SPECIFICATION</b>		<b>DOC NO</b>
3093B1	Accelerometer, Triaxial, IEPE		PS3093B1
			REV B, ECN 13435, 05/08/1476



- HIGH SENSITIVITY
- HERMETICALLY SEALED
- STUD MOUNTED

	ENGLISH	SI
--	---------	----

**PHYSICAL**

Weight	0.5	oz	13.5	grams
Mounting Provision	10-32 Stud		10-32 Stud	
Connector [1]	4-pin		4-pin	
Type	Titanium Alloy		Titanium Alloy	
Material	Titanium Alloy		Titanium Alloy	
Housing	Case Isolated		Case Isolated	
Material	Ceramic		Ceramic	
Isolation	Shear		Shear	
Mode				

**PERFORMANCE**

Sensitivity, +15/-10% [2]	100	mV/g	10.2	mV/m/s^2
Acceleration Range	50	Gpeak	491	m/s^2 peak
Frequency Range, ±10%	2-5000	Hz	2-5000	Hz
Resonance Frequency	> 30	kHz	> 30	kHz
Linearity [3]	1	%F.S.	1	%F.S.
Transverse Sensitivity, Max.	6	%	6	%
Noise floor	0.0007	Grms	0.007	m/s^2 rms

**ELECTRICAL**

Supply Current Range [4]	2 to 20	mA	2 to 20	mA
Compliance Voltage Range	+18 to +30	VDC	+18 to +30	VDC
Output Impedance, Typ.	100	Ω	100	Ω
Output Bias Voltage	+11 to +13	VDC	+11 to +13	VDC
Discharge Time Constant	0.5 to 1.5	sec	0.5 to 1.5	sec
Electrical Isolation, Min.	10	GΩ	10	GΩ

**ENVIRONMENTAL**

Shock Max	7000	g pk	68670	m/s^2
Vibration Max	3000	g pk	29430	m/s^2
Operating Temperature	-60 to +225	°F	-51 to +107	°C
Seal	Hermetic		Hermetic	°C

**This family also includes:**

Model	Sensitivity (mV/g)	Range (Gpeak)	Resolution (Grms)	Oper. Temp(°F)	TC

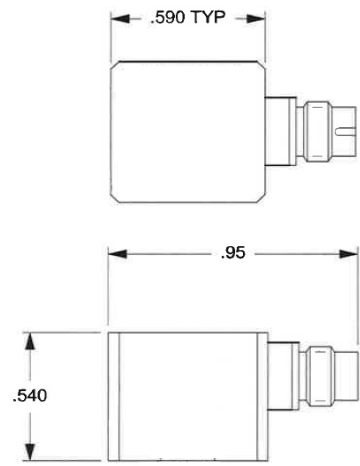
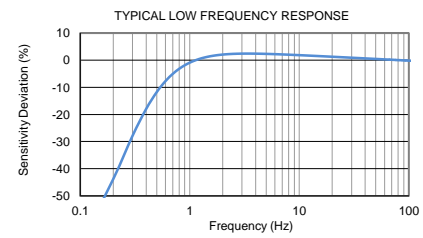
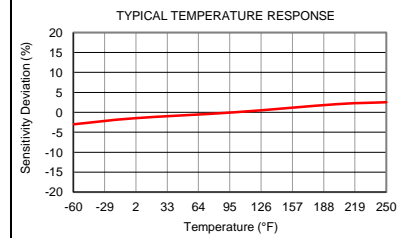
Refer to performance specifications of the products in this family for detailed description.

**Supplied Accessories:**

- 1) Model 6200 Mounting Screw
- 2) Accredited Calibration Certificate (ISO 17025)

**Notes:**

- [1] Glass to Metal seal connector. Mates with Dytran cable Model 6430AXX (XX=length in feet)
- [2] Measured At 100 Hz, 1 Grms per ISA RP 37.2
- [3] Linearity is % of specified full scale (or any less full-scale range), zero-based best fit straight line method.
- [4] Do not apply power to this device without current limiting, 20mA Max. To do so will destroy the integral IC amplifier



Units on the line drawing are in inches, units in brackets are in millimeters. Refer to 127-3093B1 for more information.



21592 Marilla Street, Chatsworth, California 91311 Phone: 818.700.7818 Fax: 818.700.7880 www.dytran.com  
 For permission to reprint this content, please contact info@dytran.com