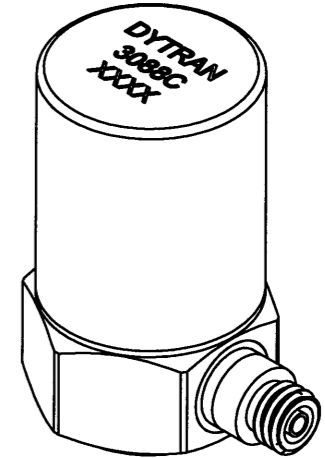
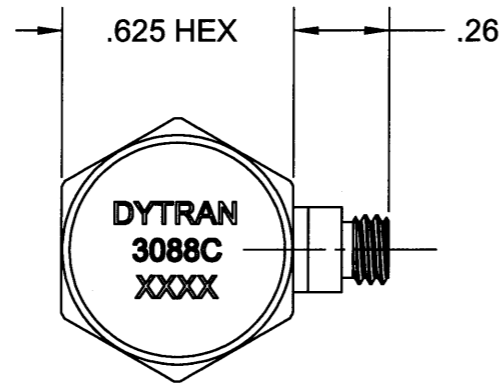


PROPRIETARY AND CONFIDENTIAL

THE INFORMATION CONTAINED IN THIS DRAWING IS THE SOLE PROPERTY OF DYTRAN INSTRUMENTS INC. ANY REPRODUCTION IN PART OR AS A WHOLE WITHOUT THE WRITTEN PERMISSION OF DYTRAN INSTRUMENTS INC IS PROHIBITED.

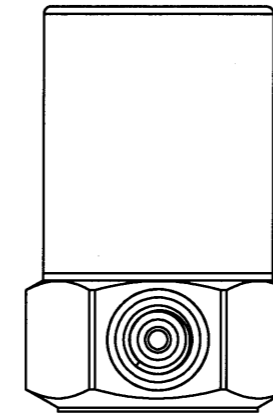
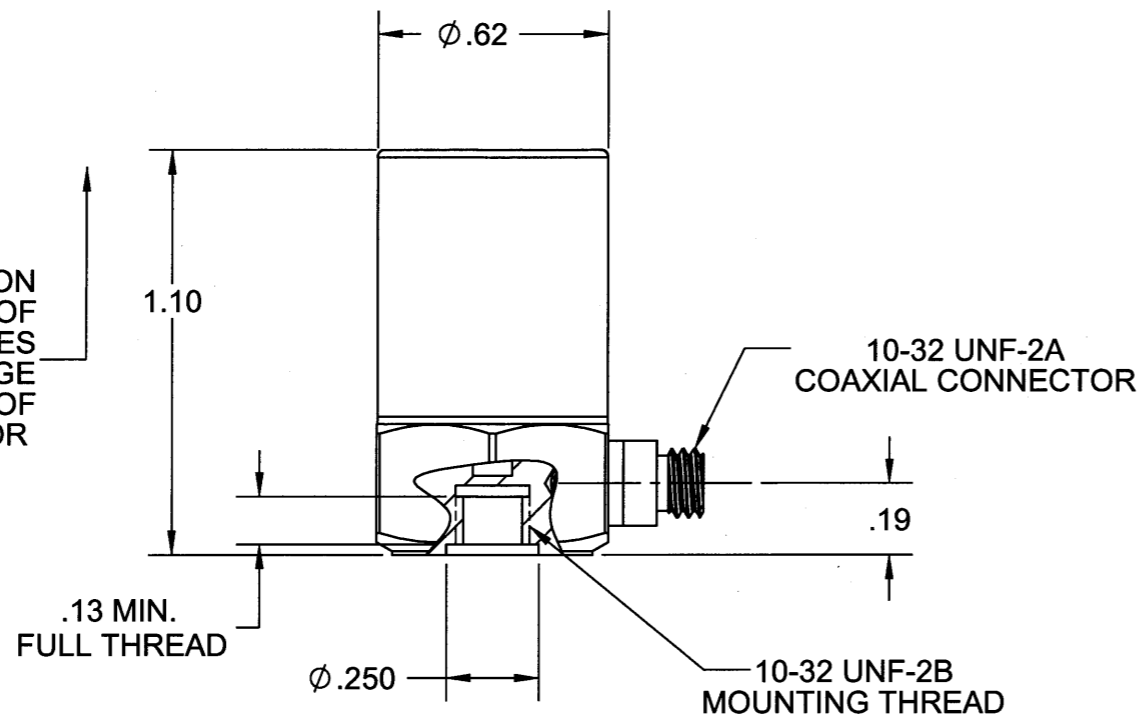
REVISIONS

REV.	ECN	DESCRIPTION	BY/DATE	CHK	APPR
A	4658	INITIAL RELEASE	RLA, 9/25/07	CEB	AML

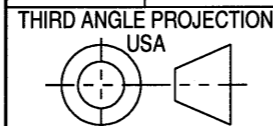


ISOMETRIC VIEW

ACCELERATION IN DIRECTION OF ARROW PRODUCES POSITIVE (+) CHARGE ON CENTER PIN OF CONNECTOR



DRILL HOLE SIZE	TOLERANCE
.0135 THRU .125	+ .004 / - .001
.1260 THRU .250	+ .005 / - .001
.2510 THRU .500	+ .006 / - .001
.5010 THRU .750	+ .008 / - .001
.7510 THRU 1.000	+ .010 / - .001
1.001 THRU 2.000	+ .012 / - .001



UNLESS OTHERWISE SPECIFIED:
 INTERPRET DIM & TOL PER ASME Y14.5M - 1994.
 REMOVE BURRS.
 COUNTERSINK INTERNAL THDS 90° TO MAJOR DIA.
 CHAM EXT THDS 45° TO MINOR DIA.
 THD LENGTHS AND DEPTHS ARE FOR MIN FULL THDS.
 THDS PER MIL-S-7742.
 DIMENSIONS APPLY AFTER FINISHING

ALL MACHINED SURFACES, TOTAL RUNOUT WITHIN .005.
 BREAK SHARP EDGES .005 TO .010.
 MACHINED FILLET RADII .005 TO .015.
 WELDING SYMBOLS PER AWS A2.4.
 ABBREVIATIONS PER MIL-STD-12.

UNLESS OTHERWISE SPECIFIED:
 DIMENSIONS ARE IN INCHES.
 TOLERANCES ARE:
 DECIMALS .XX ± .010
 .XXX ± .005
 ANGLES ± 1°

CONTRACT NO.

APPROVALS DATE

ORIG RA 3/19/2007

CHK CEB 10.31.07

APP AML 10/25/07

APP

DO NOT SCALE DRAWING

DYTRAN INSTRUMENTS, INC. **MASTER COPY** **ONLY IF IN RED**

TITLE: **OUTLINE DRAWING, MODEL 3088C**

SIZE B	CAGE CODE 2W033	DWG NO 127-3088C	REV A
SCALE: 1:1	SOLIDWORKS	SHEET 1 of 1	

Model Number
3088C

PERFORMANCE SPECIFICATIONS

DOC NO
PS3088C

CHARGE MODE ACCELEROMETER

REV A, ECN 11725, 02/04/15



- CHARGE MODE
- HIGH TEMPERATURE
- HERMETICALLY SEALED

ENGLISH		SI	
Weight, Max.	1.5 oz	42 grams	
Connector, Type	10-32 UNF-2A	10-32 UNF-2A	
Material, Housing/Connector	300 Series	300 Series	
Sensing Element	Ceramic	Ceramic	
PERFORMANCE			
Sensitivity, ±5% [1]	10 pC/g	1 pC/m/s ²	
Frequency Response, ±5%	[2] to 5000 Hz	[2] to 5000 Hz	
Resonant Frequency	>30 kHz	>30 kHz	
Linearity [3]	±2 % F.S.	±2 % F.S.	
Maximum Transverse Sensitivity	6 %	6 %	
Base Strain Sensitivity @ 250µε	0.06 g/µε	0.6 m/s ² /µε	
ENVIRONMENTAL			
Maximum Vibration	±1000 Gpeak	±9810 m/s ² peak	
Maximum Shock	±3000 Gpeak	±29430 m/s ² peak	
Temperature Range	-65 to +600 °F	-54 to +316 °C	
Coefficient of Thermal Sensitivity	≤ 0.018 %/°F	≤ 0.036 %/°C	
Seal	Hermetic	Hermetic	
ELECTRICAL			
Capacitance, Nom	370 pF	370 pF	
Insulation Resistance	At 300°F (149°C)	>5 GΩ	>5 GΩ
	500°F (260°C)	>200 MΩ	>200 MΩ
	600°F (316°C)	>2 MΩ	>2 MΩ

This family also includes:

Model	Sensitivity (mV/g)	Frequency Response (Hz)	Time Constant (Sec)	Operating Temp (°F)

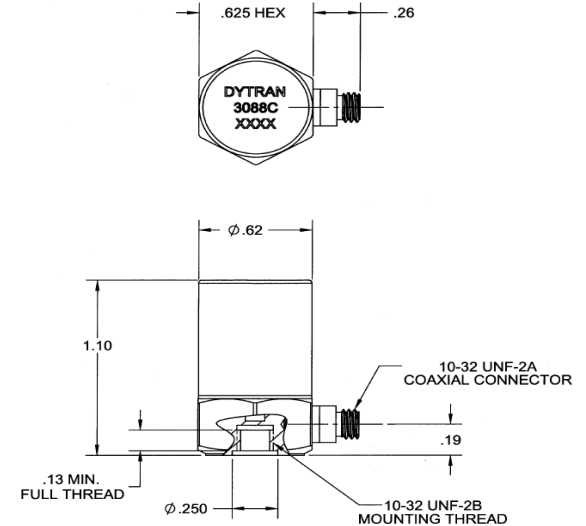
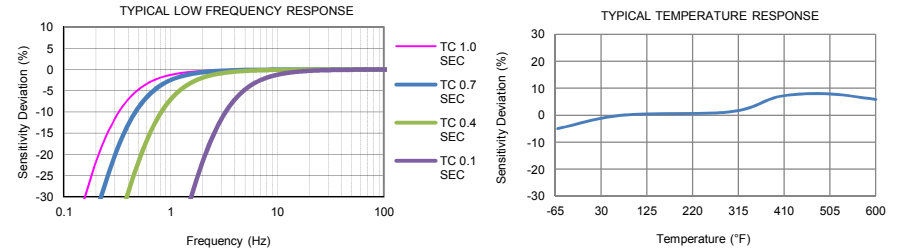
Refer to the performance specifications of the products in this family for detailed description

Supplied Accessories:

- 1) Accredited calibration certificate (ISO 17025)
- 2) Mounting stud, Dytran model 6200 (10-32 UNF-2A to 10-32 UNF-2A), Qty: 1

Notes:

- [1] Measured at 100Hz, 1 Grms per ISA RP 37.2.
- [2] Low frequency response is a function of the charge amplifier discharge time constant.
- [3] Measured using zero-based straight line method, % of F.S. or any lesser range.
- [4] In the interest of constant product improvement, we reserve the right to change specifications without notice.



Units on the line drawing are in inches, units in brackets are in millimeters. Refer to 127-3088C or more information.



21592 Marilla Street, Chatsworth, California 91311 Phone: 818.700.7818 Fax: 818.700.7880 www.dytran.com
For permission to reprint this content, please contact info@dytran.com