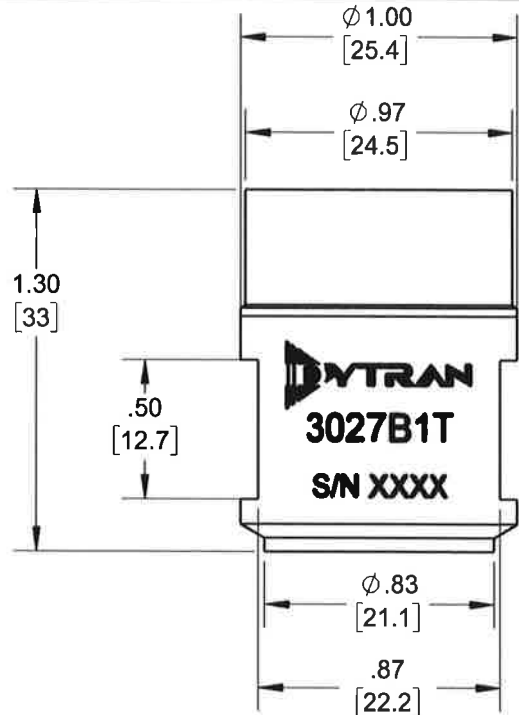


PROPRIETARY AND CONFIDENTIAL

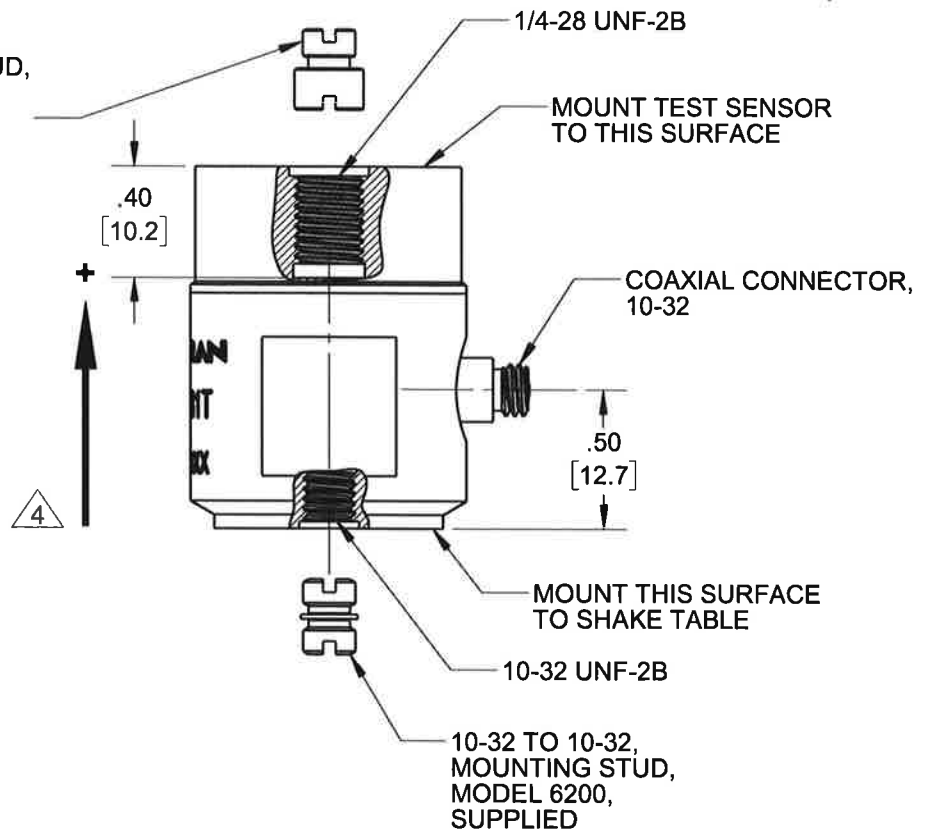
THE INFORMATION CONTAINED IN THIS DRAWING IS THE SOLE PROPERTY OF DYTRAN INSTRUMENTS INC. ANY REPRODUCTION IN PART OR AS A WHOLE WITHOUT THE WRITTEN PERMISSION OF DYTRAN INSTRUMENTS INC. IS PROHIBITED

REVISIONS

REV	ECN	DESCRIPTION	BY/DATE	CHK	APPR
A	11764	INITIAL RELEASE SAME AS X3	LN 04/24/15	<i>SP</i>	<i>RT</i>



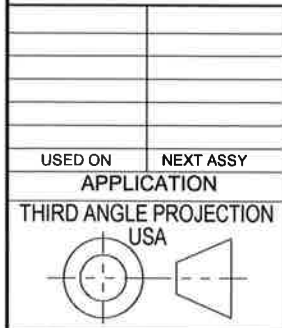
1/4-28 TO 10-32, MOUNTING STUD, MODEL 6201, SUPPLIED



4 ARROW INDICATES DIRECTION OF ACCELERATION FOR POSITIVE-GOING OUTPUT VOLTAGE.

- 3. RECOMMENDED MOUNTING TORQUE: 10-12 Lb-in
- 2. MATERIAL: TITANIUM ALLOY
- 1. WEIGHT: 70 GRAMS, MAX.

NOTES: UNLESS OTHERWISE SPECIFIED



UNLESS OTHERWISE SPECIFIED:
 INTERPRET DIM & TOL PER ASME Y14.5M - 1994.
 REMOVE BURRS.
 COUNTERSINK INTERNAL THDS 90° TO MAJOR DIA.
 CHAM EXT THDS 45° TO MINOR DIA.
 THD LENGTHS AND DEPTHS ARE FOR MIN FULL THDS.
 THDS PER MIL-S-7742.
 DIMENSIONS APPLY AFTER FINISHING.

ALL MACHINED SURFACES. TOTAL RUNOUT WITHIN .005.
 BREAK SHARP EDGES .005 TO .010.
 MACHINED FILLET RADII .005 TO .015.
 WELDING SYMBOLS PER AWS A2.4.
 ABBREVIATIONS PER MIL-STD-12.

UNLESS OTHERWISE SPECIFIED:
 DIMENSIONS ARE IN INCHES. DIMENSIONS IN BRACKETS [] ARE IN MILLIMETERS
 TOLERANCES ARE:
 INCHES METRIC ANGLES
 .XX ± .03 X ± 0.8 ± 1°
 .XXX ± .010 .XX ± 0.25

MATERIAL

FINISH

DO NOT SCALE DRAWING

CONTRACT NO.	
APPROVALS	
ORIG	LN
CHK	DATE
APP	4-24/15
APP	4/24/15

DYTRAN INSTRUMENTS, INC. Chatsworth, CA

TITLE: **OUTLINE/INSTALLATION DWG, ACCEL, BACK TO BACK STANDARD, MODEL 3027B1T**

SIZE	CAGE CODE	DWG. NO.	REV
A	2W033	127-3027B1T	A

SCALE: NONE SOLIDWORKS SHEET 1 OF 1

Model Number 3027B1T	PERFORMANCE SPECIFICATIONS	DOC NO PS3027B1T
--------------------------------	-----------------------------------	----------------------------

	IEPE ACCELEROMETER, BACK TO BACK STANDARD	REV B, ECN 13589, 07/28/17
--	--	----------------------------



- **BACK TO BACK STANDARD ACCELEROMETER**
- **HIGH SENSITIVITY**
- **HERMETICALLY SEALED**
- **TEDS FEATURE**

PHYSICAL

Weight, Max.
Connector [1]
Material
Sensing Material

ENGLISH		SI	
2.5	oz	70	grams
10-32		10-32	
Titanium		Titanium	
Quartz		Quartz	

PERFORMANCE

Sensitivity, ±5% [2]
Range F.S for ± 5 Volts Output
Frequency Response, ±5%
Resonant Frequency
Equivalent Electrical Noise Floor, Max
Linearity [3]
Maximum Transverse sensitivity
Strain Sensitivity @ 250µε, Max

100	mV/g	10.2	mV/m/s ²
±50	g	±491	m/s ²
0.5 to 10,000	Hz	0.5 to 10,000	Hz
>25	kHz	>25	kHz
0.001	Grms	0.01	m/s ² rms
± 1%	% F.S.	± 1%	% F.S.
3	%	3	%
< 0.01	g/µε	< 0.098	m/s ² /µε

ENVIRONMENTAL

Maximum Vibration
Maximum Shock
Operational Temperature Range
TEDS Operating Temperature
Seal

± 1000	Gpeak	± 9810	m/s ² peak
± 3000	Gpeak	± 29430	m/s ² peak
-60 to +185	°F	-51 to +85	°C
-40 to +185	°F	-40 to +85	°C
Hermetic		Hermetic	

ELECTRICAL

Supply Current Range [4]
Compliance Voltage Range
Output Impedance, Nom
Bias Voltage
Discharge Time Constant
TEDS Feature

2.0 to 20	mA	2.0 to 20	mA
+ 18 to +30	VDC	+ 18 to +30	VDC
100	Ω	100	Ω
7.5 to 9.5	VDC	7.5 to 9.5	VDC
1.0 to 2.0	Sec	1.0 to 2.0	Sec
IEEE 1451.4		IEEE 1451.4	

This family also includes:

Model	Sensitivity (mV/g)	Frequency Response (Hz)	Time Constant (Sec)	Operating Temp (°F)

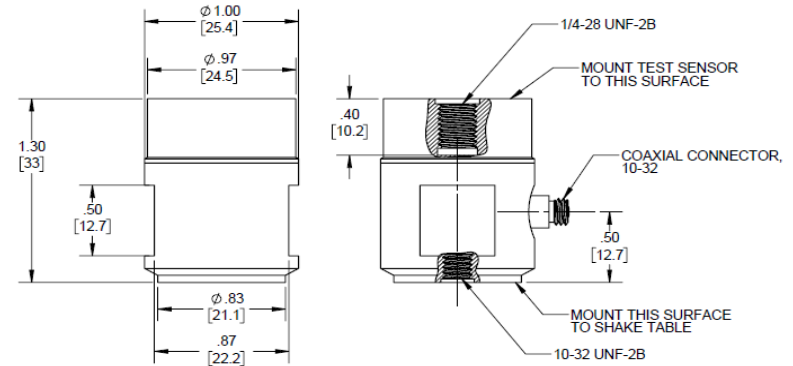
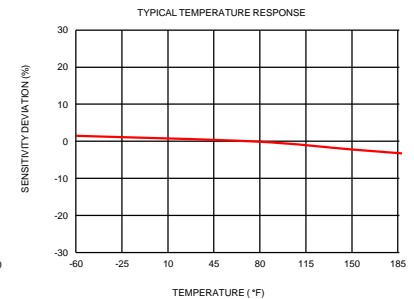
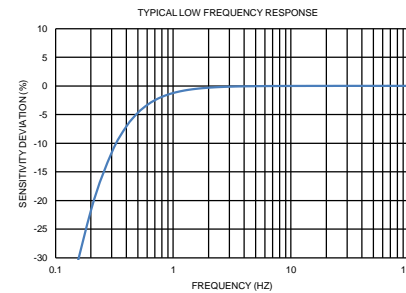
Refer to the performance specifications of the products in this family for detailed description.

Supplied Accessories:

- 1) Accredited calibration certificate (ISO 17025)
- 2) 10-32 to 10-32 mounting stud, Model 6200. Qty. 1
- 3) 1/4-28 to 10-32 mounting stud, Model 6201. Qty. 1

Notes:

- [1] Mates with Dytran cable Model 6010AXX or 6011AXX
- [2] Measure at 100Hz, 1 Grms per ISA RP 37.2
- [3] Measured using zero-based straight line method, % of F.S. or any lesser range.
- [4] Do not apply power to this system without current limiting, 20 mA MAX. To do so will destroy the IC charge amplifier.
- [5] In the interest of constant product improvement, Dytran reserves the rights to change specifications without notice.



Units on the line drawing are in inches, units in brackets are in millimeters. Refer to 127-3027B1T for more information.



21592 Marilla Street, Chatsworth, California 91311 Phone: 818.700.7818 Fax: 818.700.7880 www.dytran.com
For permission to reprint this content, please contact info@dytran.com