

PROPRIETARY AND CONFIDENTIAL

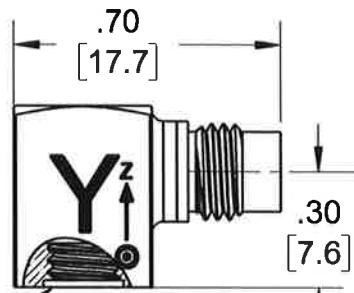
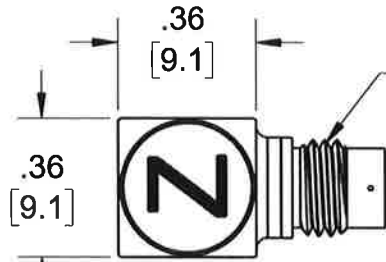
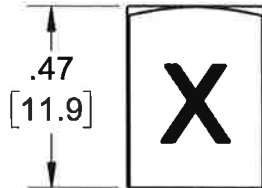
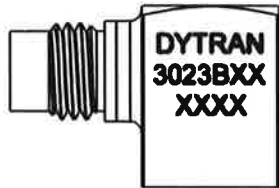
THE INFORMATION CONTAINED IN THIS DRAWING IS THE SOLE PROPERTY OF DYTRAN INSTRUMENTS INC. ANY REPRODUCTION IN PART OR AS A WHOLE WITHOUT THE WRITTEN PERMISSION OF DYTRAN INSTRUMENTS INC. IS PROHIBITED

REVISIONS

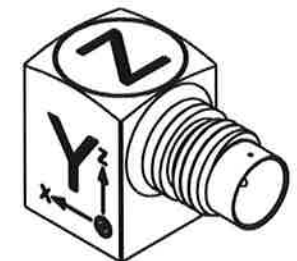
REV	ECN	DESCRIPTION	BY/DATE	CHK	APPR
A	11363	INITIAL RELEASE	JS 04/11/15	<i>[Signature]</i>	<i>[Signature]</i>

VARIATION TABLE

MODEL NO.	SENSITIVITY	TEDS
3023B7	1 mV/g	NO
3023B8	5 mV/g	NO
3023B9	10 mV/g	NO
3023B7T	1 mV/g	YES
3023B8T	5 mV/g	YES
3023B9T	10 mV/g	YES



1/4-28 4-PIN CONNECTOR



PIN 4
X AXIS
(1) OUTPUT

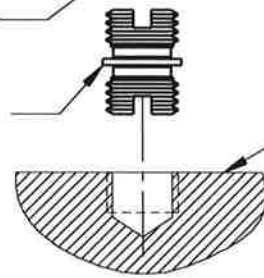
KEY

PIN 1
GND

PIN 3
Z AXIS
(3) OUTPUT

PIN 2
Y AXIS
(2) OUTPUT

10-32 UNF-2B ∇ .12
[] .14 ∇ .02



MOUNTING RECOMMENDATIONS:
PREPARE SURFACE AT LEAST ϕ .39 [7.5]
FLAT TO .001 TIR.
TAP 10-32 UNF-2B ∇ .140 [3.6] MIN.
MOUNTING TORQUE: 10-12 Lb-in.

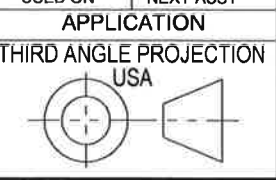
- 7 MODEL 6200, 10-32 UNF-2A MOUNTING STUD, SUPPLIED
- 6 MATES WITH DYTRAN 6811AXX OR 6824AXX CABLE (XX=LENGTH IN FEET)
- 5. OPERATIONAL TEMPERATURE: RANGE -60° TO +325°F
- 4. SENSITIVITY: SEE CHART.
- 3. WEIGHT: 4 GRAMS MAX.
- 2. ARROWS INDICATE ACCELERATION DIRECTION FOR POSITIVE OUTPUT
- 1. MATERIAL: TITANIUM ALLOY

NOTES: UNLESS OTHERWISE SPECIFIED.

3023B7	
3023B8	
3023B9	
3023B7T	
3023B8T	
3023B9T	
USED ON	NEXT ASSY

UNLESS OTHERWISE SPECIFIED:
INTERPRET DIM & TOL PER ASME Y14.5M - 1994.
REMOVE BURRS.
COUNTERSINK INTERNAL THDS 90° TO MAJOR DIA.
CHAM EXT THDS 45° TO MINOR DIA.
THD LENGTHS AND DEPTHS ARE FOR MIN FULL THDS.
THDS PER MIL-S-7742.
DIMENSIONS APPLY AFTER FINISHING.

UNLESS OTHERWISE SPECIFIED:
DIMENSIONS ARE IN INCHES.
DIMENSIONS IN BRACKETS [] ARE IN MILLIMETERS
TOLERANCES ARE:
INCHES METRIC ANGLES
XX ± .03 X ± 0.8 ± 1°
.XXX ± .010 .XX ± 0.25



ALL MACHINED SURFACES \checkmark 63/
TOTAL RUNOUT WITHIN .005.
BREAK SHARP EDGES .005 TO .010.
MACHINED FILLET RADII .005 TO .015.
WELDING SYMBOLS PER AWS A2.4.
ABBREVIATIONS PER MIL-STD-12.

MATERIAL _____
FINISH _____
DO NOT SCALE DRAWING

CONTRACT NO. _____



TITLE:
**OUTLINE/INSTALLATION
DRAWING, MODEL 3023B SERIES**

APPROVALS		DATE
ORIG	NDC	3/11/14
CHK	<i>[Signature]</i>	5-2-14
APP	<i>[Signature]</i>	5/9/15
APP		

SIZE A	CAGE CODE 2W033	DWG. NO. 127-3023B7	REV A
SCALE: NONE		SOLIDWORKS	SHEET 1 OF 1

MODEL NUMBER 3023B9	PERFORMANCE SPECIFICATION	DOC NO. PS3023B9
	ACCELEROMETER, TRIAXIAL, IEPE	REV A, ECN 13036, 11/07/16



- **HIGH TEMPERATURE**
- **HERMETICALLY SEALED**
- **MINIATURE SIZE**

PHYSICAL

Weight, Max
Mounting
Connector [1]
Material, Housing / Connector

ENGLISH		SI	
0.14	oz	4.0	grams
10-32 Tapped Hole		10-32 Tapped Hole	
4-pin		4-pin	
Titanium		Titanium	

PERFORMANCE

Sensitivity, -10% / +15% [2]
Range F.S. (each axis)
Frequency Response, ±5%
 ±15%
Element Natural Frequency
Equivalent Electrical Noise
Spectral Noise
Linearity [3]
Transverse Sensitivity, Max
Signal Polarity

	ENGLISH		SI	
Sensitivity	10	mV/g	1.0	mV/m/s ²
Range	±500	g	±4905	m/s ²
Frequency Response	2.5 to 4000	Hz	2.5 to 4000	Hz
	2 to 10000	Hz	2 to 10000	Hz
Element Natural Frequency	25	kHz	25	kHz
Equivalent Electrical Noise	0.007	grms	0.07	m/s ² rms
Spectral Noise	1.25Hz	680	6671	μm/s ² rms/√(Hz)
	10Hz	680	6671	μm/s ² rms/√(Hz)
	100Hz	120	1177	μm/s ² rms/√(Hz)
	1000Hz	31.5	309	μm/s ² rms/√(Hz)
	10000Hz	22	216	μm/s ² rms/√(Hz)
Linearity	±1	% F.S.	±1	% F.S.
Transverse Sensitivity	5	%	5	%
Signal Polarity	[5]		[5]	

ELECTRICAL

Supply Current Range [4]
Compliance Voltage Range
Output Impedance, Typ.
Output Bias Voltage
Discharge Time Constant
Magnetic Sens. at 100 Gauss
Strain Sensitivity @ 250με
Ground Isolation

	ENGLISH		SI	
Supply Current Range	2 to 20	mA	2 to 20	mA
Compliance Voltage Range	+18 to +30	VDC	+18 to +30	VDC
Output Impedance, Typ.	100	Ω	100	Ω
Output Bias Voltage	7 to 12	VDC	7 to 12	VDC
Discharge Time Constant	0.2 to 2.0	sec	0.2 to 2.0	sec
Magnetic Sens. at 100 Gauss	0.00005	g/Gauss	4.905	m/s ² /T
Strain Sensitivity @ 250με	0.008	g/με	0.08	m/s ² /με
Ground Isolation	Case Ground		Case Ground	

ENVIRONMENTAL

Maximum Shock
Maximum Vibration
Temperature Range
Environmental Seal

	ENGLISH		SI	
Maximum Shock	±1000	g pk	±9810	m/s ²
Maximum Vibration	±600	g pk	±5886	m/s ²
Temperature Range	-60 to +325	°F	-51 to +163	°C
Environmental Seal	Hermetic		Hermetic	

This family also includes:

Model	Sensitivity (mV/g)	Range (Gpeak)	Resolution (Grms)	Oper. Temp (°F)	TC
3023B7	1	5000	0.07	-60 to +325	0.2 to 2.0
3023B8	5	1000	0.014	-60 to +325	0.2 to 2.0
3023B7T	1	5000	0.07	-60 to +325	0.2 to 2.0
3023B8T	5	1000	0.014	-60 to +325	0.2 to 2.0
3023B9T	10	500	0.007	-60 to +325	0.2 to 2.0

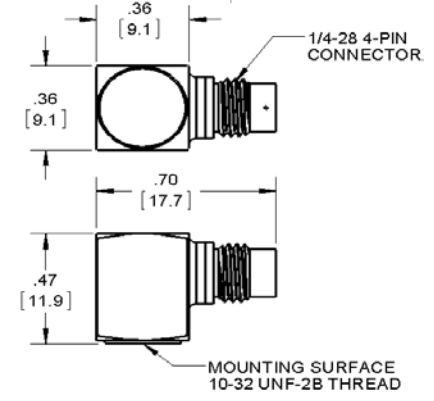
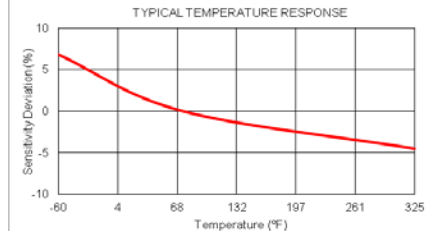
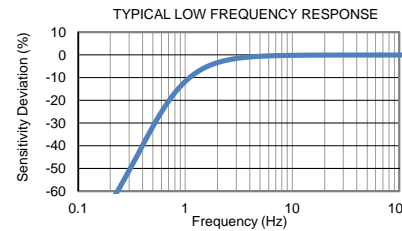
Please, refer to the performance specifications of the products in this family for detailed description

Supplied Accessories:

- 1) Accredited Calibration Certificate (ISO 17025)
- 2) Model 6200 Mounting Stud, Qty 1.

Notes:

- [1] Connector mates with Dytran's cable assy. model 6811AXX or 6824AXX. (xx = length in feet)
- [2] Measured At 100 Hz, 1 Grms per ISA RP 37.2
- [3] Measured using zero-based best straight-line method, % of F.S. or any lesser range.
- [4] Power only with Dytran IEPE power unit or other Dytran-compatible constant current type power unit. If power is applied without current limiting protection, the internal amplifier will be destroyed.
- [5] Positive for motion in direction of arrows on housing.
- [6] In the interest of constant product improvement, we reserve the right to change the specification without notice.



Units on the line drawing are in inches, units in brackets are in millimeters. Refer to 127-3023B7 for more information.



21592 Marilla Street, Chatsworth, California 91311 Phone: 818.700.7818 Fax:818.700.7880
www.dytran.com For permission to reprint this content, please contact info@dytran.com