

PROPRIETARY AND CONFIDENTIAL

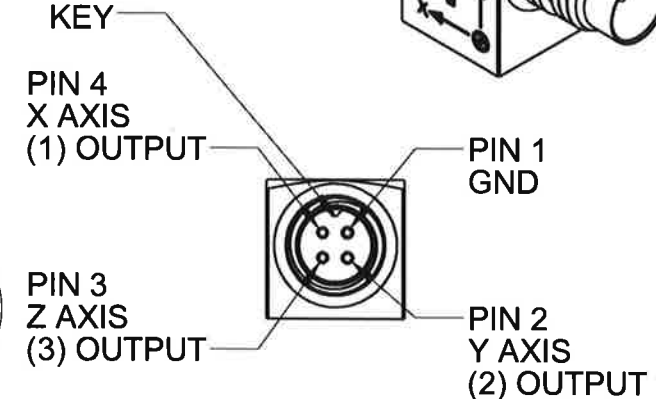
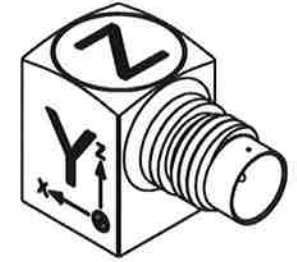
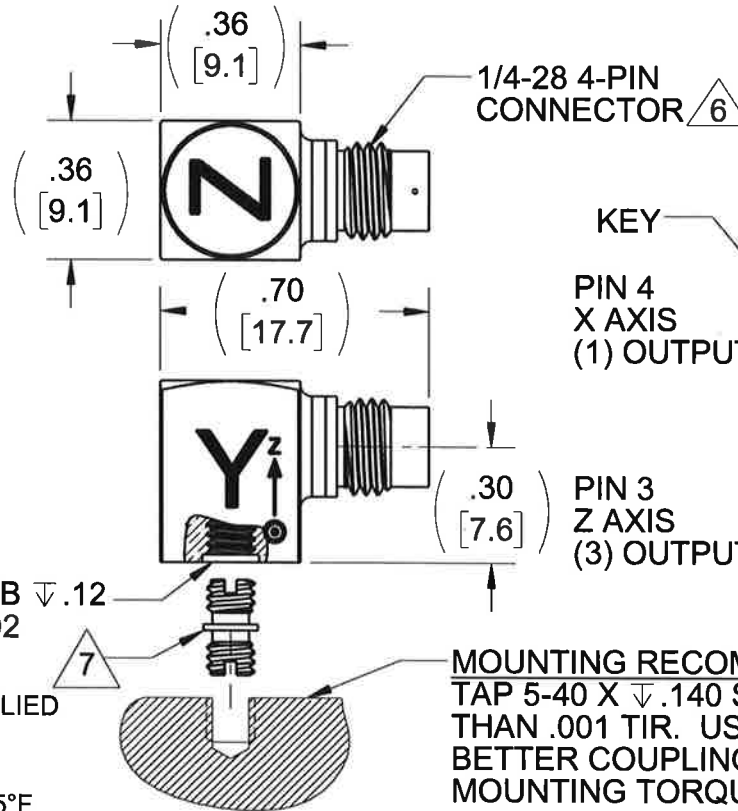
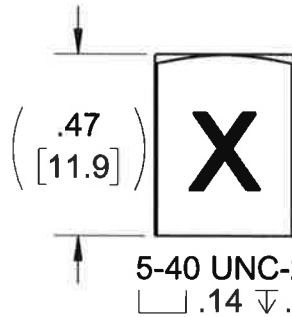
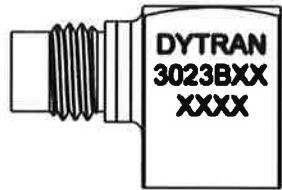
THE INFORMATION CONTAINED IN THIS DRAWING IS THE SOLE PROPERTY OF DYTRAN INSTRUMENTS INC. ANY REPRODUCTION IN PART OR AS A WHOLE WITHOUT THE WRITTEN PERMISSION OF DYTRAN INSTRUMENTS INC. IS PROHIBITED

REVISIONS

REV	ECN	DESCRIPTION	BY/DATE	CHK	APPR
A	13036	INITIAL RELEASE	JS 10/14/16	LA	LW

VARIATION TABLE

MODEL NO.	SENSITIVITY	TEDS
3023B4	1mV/g	NO
3023B5	5mV/g	NO
3023B6	10mV/g	NO
3023B4T	1mV/g	YES
3023B5T	5mV/g	YES
3023B6T	10mV/g	YES



- 7 MODEL 6580, 5-40 UNC-2A MOUNTING STUD, SUPPLIED
- 6 MATES WITH DYTRAN 6811AXX OR 6824AXX CABLE (XX=LENGTH IN FEET)
- 5. OPERATIONAL TEMPERATURE: RANGE -60° TO +325°F
- 4. SENSITIVITY: SEE CHART.
- 3. WEIGHT: 3 GRAMS MAX.
- 2. ARROWS INDICATE ACCELERATION DIRECTION FOR POSITIVE OUTPUT
- 1. MATERIAL: TITANIUM ALLOY

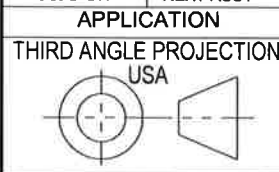
MOUNTING RECOMMENDATIONS:
 TAP 5-40 X .140 SURFACE FLATNESS BETTER THAN .001 TIR. USE SILICONE GREASE FOR BETTER COUPLING.
 MOUNTING TORQUE: 6-8 LB-IN.

NOTES: UNLESS OTHERWISE SPECIFIED.

3023B4	
3023B5	
3023B6	
3023B4T	
3023B5T	
3023B6T	
USED ON	NEXT ASSY

UNLESS OTHERWISE SPECIFIED:
 INTERPRET DIM & TOL PER ASME Y14.5M - 1994.
 REMOVE BURRS.
 COUNTERSINK INTERNAL THDS 90° TO MAJOR DIA.
 CHAM EXT THDS 45° TO MINOR DIA.
 THD LENGTHS AND DEPTHS ARE FOR MIN FULL THDS.
 THDS PER MIL-S-7742.
 DIMENSIONS APPLY AFTER FINISHING.

UNLESS OTHERWISE SPECIFIED:
 DIMENSIONS ARE IN INCHES. DIMENSIONS IN BRACKETS [] ARE IN MILLIMETERS
 TOLERANCES ARE:
 INCHES METRIC ANGLES
 .XX ± .03 .X ± 0.8 ± 1°
 .XXX ± .010 .XX ± 0.25



ALL MACHINED SURFACES:
 TOTAL RUNOUT WITHIN .005.
 BREAK SHARP EDGES .005 TO .010.
 MACHINED FILLET RADII .005 TO .015.
 WELDING SYMBOLS PER AWS A2.4.
 ABBREVIATIONS PER MIL-STD-12.

MATERIAL
 FINISH
 DO NOT SCALE DRAWING

CONTRACT NO.	
APPROVALS	DATE
ORIG	NDC 03/11/14
CHK	LA 4/4/16
APP	LW 11/10/16

MASTER
DYTRAN
 INSTRUMENTS, INC. Chatsworth, CA

TITLE:
**OUTLINE/INSTALLATION DRAWING,
 MODEL 3023B SERIES**

SIZE	CAGE CODE	DWG. NO.	REV
A	2W033	127-3023B4	B

SCALE: NONE SOLIDWORKS SHEET 1 OF 1

MODEL NUMBER 3023B6T	PERFORMANCE SPECIFICATION	DOC NO. PS3023B6T
	ACCELEROMETER, TRIAXIAL, IEPE	REV B, ECN 13594, 8/10/17



- **HIGH TEMPERATURE**
- **HERMETICALLY SEALED**
- **MINIATURE SIZE**
- **TEDS FEATURE**

PHYSICAL

Weight, Max.
Mounting
Connector [1]
Material, Housing / Connector

ENGLISH		SI
0.14	oz	4.0 grams
5-40 Tapped Hole		5-40 Tapped Hole
4-pin		4-pin
Titanium		Titanium

PERFORMANCE

Sensitivity, -10% / +15% [2]
Range F.S. (each axis)
Frequency Response, ±5%
, ±15%
Element Natural Frequency
Equivalent Electrical Noise
Spectral Noise
Linearity [3]
Transverse Sensitivity, Max.
Signal Polarity

ENGLISH		SI
10	mV/g	1.02 mV/m/s ²
±500	g	±4905 m/s ²
2.5 to 4000	Hz	2.5 to 4000 Hz
2 to 10000	Hz	2 to 10000 Hz
25	kHz	25 kHz
0.007	grms	0.07 m/s ² rms
1.25Hz	μGrms/√(Hz)	6671 μm/s ² rms/√(Hz)
10Hz	μGrms/√(Hz)	6671 μm/s ² rms/√(Hz)
100Hz	μGrms/√(Hz)	1177 μm/s ² rms/√(Hz)
1000Hz	μGrms/√(Hz)	309 μm/s ² rms/√(Hz)
10000Hz	μGrms/√(Hz)	216 μm/s ² rms/√(Hz)
±1	% F.S.	±1 % F.S.
5	%	5 %
[5]		[5]

ELECTRICAL

Supply Current Range [4]
Compliance Voltage Range
Output Impedance, Typ.
Output Bias Voltage
Discharge Time Constant
Magnetic Sens. at 100 Gauss
Strain Sensitivity @ 250με
Ground Isolation

ENGLISH		SI
2 to 20	mA	2 to 20 mA
+18 to +30	VDC	+18 to +30 VDC
100	Ω	100 Ω
7 to 12	VDC	7 to 12 VDC
0.2 -2.0	sec	0.2 -2.0 sec
0.00005	g/Gauss	4.905 m/s ² /T
0.008	g/με	0.08 m/s ² /με
Case Ground		Case Ground

ENVIRONMENTAL

Maximum Shock
Maximum Vibration
Temperature Range
TEDS Operating Temp.
Environmental Seal
TEDS

ENGLISH		SI
±1000	g pk	±9810 m/s ²
±600	g pk	±5886 m/s ²
-60 to +325	°F	-51 to +162 °C
-40 to +185	°F	-40 to +85 °C
Hermetic		Hermetic
IEEE 1451.4		IEEE 1451.4

This family also includes:

Model	Sensitivity (mV/g)	Range (Gpeak)	Resolution (Grms)	Oper. Temp (°F)	TC
3023B4	1	5000	0.07	-60 to +325	0.2 to 2.0
3023B5	5	1000	0.014	-60 to +325	0.2 to 2.0
3023B6	10	500	0.007	-60 to +325	0.2 to 2.0
3023B4T	1	5000	0.07	-60 to +325	0.2 to 2.0
3023B5T	5	1000	0.014	-60 to +325	0.2 to 2.0

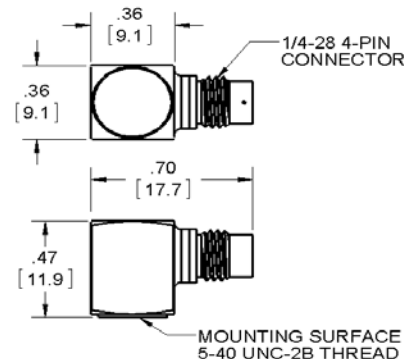
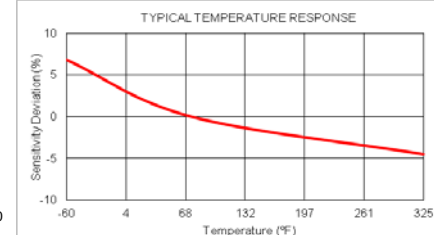
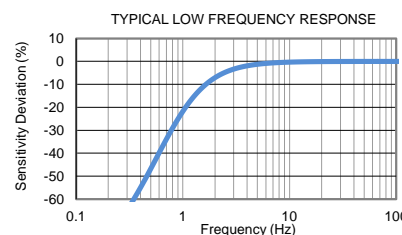
Please, refer to the performance specifications of the products in this family for detailed description

Supplied Accessories:

- 1) Accredited Calibration Certificate (ISO 17025)
- 2) Model 6580 Mounting Stud, Qty 1.

Notes:

- [1] Connector mates with Dytran's cable assy. model 6811AXX or 6824AXX. (xx = length in feet)
- [2] Measured At 100 Hz, 1 Grms per ISA RP 37.2
- [3] Measured using zero-based best straight-line method, % of F.S. or any lesser range.
- [4] Power only with Dytran IEPE power unit or other Dytran-compatible constant current type power unit. If power is applied without current limiting protection, the internal amplifier will be destroyed.
- [5] Positive for motion in direction of arrows on housing.
- [6] In the interest of constant product improvement, we reserve the right to change the specification without notice.



Units on the line drawing are in inches, units in brackets are in millimeters. Refer to 127-3023B4 for more information.



21592 Marilla Street, Chatsworth, California 91311 Phone: 818.700.7818 Fax:818.700.7880
www.dytran.com For permission to reprint this content, please contact info@dytran.com