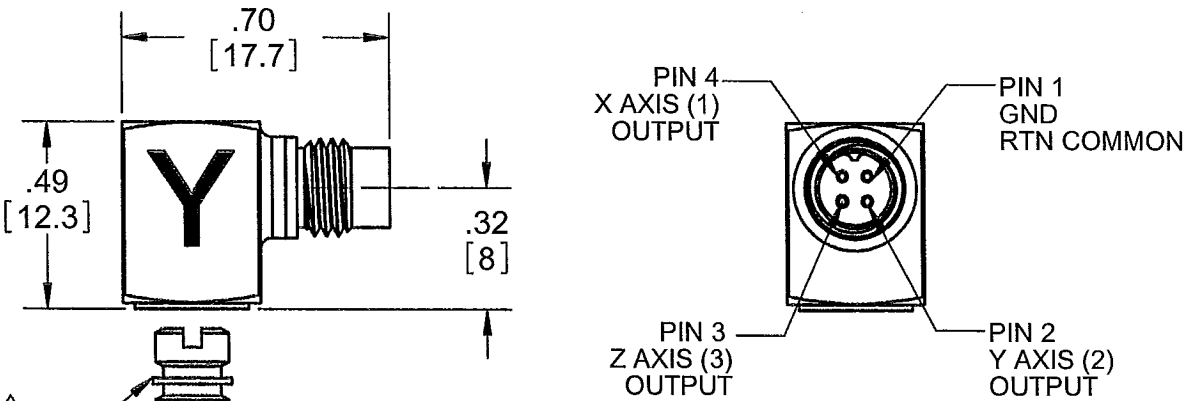
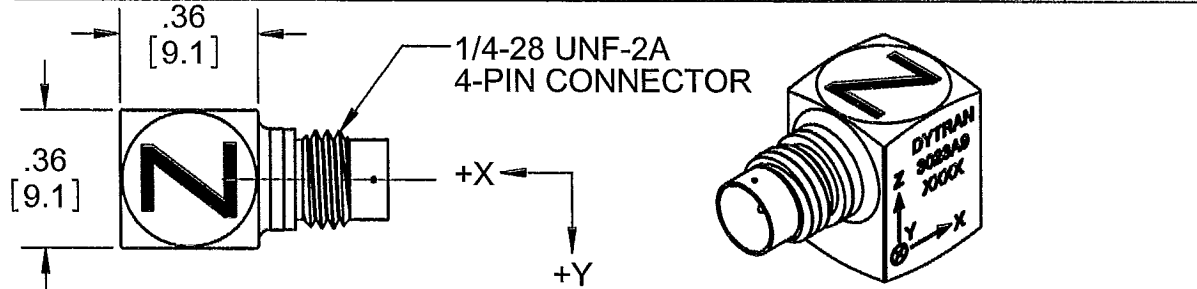


PROPRIETARY AND CONFIDENTIAL

THE INFORMATION CONTAINED IN THIS DRAWING IS THE SOLE PROPERTY OF DYTRAN INSTRUMENTS INC. ANY REPRODUCTION IN PART OR AS A WHOLE WITHOUT THE WRITTEN PERMISSION OF DYTRAN INSTRUMENTS, INC. IS PROHIBITED

REVISIONS

REV	ECN	DESCRIPTION	BY/DATE	CHK	APPR
B	9549	.001 TIR WAS: .0001 TIR	JS 01/22/12	AB	<i>[Signature]</i>



5 MOUNTING STUD
MODEL 6200 SUPPLIED.

4. HOUSING/CONNECTOR MATERIAL: TITANIUM
3. ARROWS INDICATE DIRECTIONS OF ACCELERATION.

FOR POSITIVE OUTPUT.

2. SENSITIVITY: 1 mV/G

1. WEIGHT: 4.0 GRAMS APPROXIMATELY

MOUNTING RECOMMENDATIONS
PREPARE A SURFACE TO A FLATNESS
EQUAL OR BETTER THAN .001 TIR.
TAP 10-32 UNF-2B ∇ .200 MIN.

NOTES: UNLESS OTHERWISE SPECIFIED.

UNLESS OTHERWISE SPECIFIED: INTERPRET DIM & TOL PER ASME Y14.5M - 1994. REMOVE BURRS. COUNTERSINK INTERNAL THDS 90° TO MAJOR DIA. CHAM EXT THDS 45° TO MINOR DIA. THD LENGTHS AND DEPTHS ARE FOR MIN FULL THDS. THDS PER MIL-S-7742. DIMENSIONS APPLY AFTER FINISHING.	
3023A9	NEXT ASSY
APPLICATION	
THIRD ANGLE PROJECTION USA	
ALL MACHINED SURFACES. TOTAL RUNOUT WITHIN .005. BREAK SHARP EDGES .005 TO .010. MACHINED FILLET RADII .005 TO .015. WELDING SYMBOLS PER AWS A2.4. ABBREVIATIONS PER MIL-STD-12.	

UNLESS OTHERWISE SPECIFIED: DIMENSIONS ARE IN INCHES. DIMENSIONS IN BRACKETS [] ARE IN MILLIMETERS TOLERANCES ARE: INCHES METRIC ANGLES .XX ± .03 X ± 0.8 ± 1° .XXX ± .010 .XX ± 0.25		
MATERIAL		
FINISH		
DO NOT SCALE DRAWING		

CONTRACT NO.		
APPROVALS		DATE
ORIG	DV	07/01/09
CHK	JS	07/17/09
APP	DV	07/17/09
APP	<i>[Signature]</i>	2/5/12

DYTRAN MASTER
INSTRUMENTS, INC. ONLY WORTH THE PRICE

TITLE:
**OUTLINE/INSTALLATION
DRAWING, MODEL 3023A9**

SIZE A	CAGE CODE 2W033	DWG. NO. 127-3023A9	REV B
SCALE: 2:1		SOLIDWORKS	SHEET 1 OF 1

TRI AXIAL IEPE ACCELEROMETER

REV E, ECN 13402, 04/18/17



- **STUD MOUNT**
- **EXCELLENT LINEARITY**
- **ULTRA LOW WEIGHT**

This family also includes:

Model	Sensitivity (mV/g)	Frequency Response (Hz)	Mounting	Operating Temp (°F)
3023A	10 (-10 to +15%)	1.5 to 10000 (-5 to +15%)	Adhesive	-60 to +250
3023A1	10 (-10 to +15%)	1.5 to 10000 (-5 to +15%)	5-40 Tapped Hole	-60 to +250
3023A2	10 (-10 to +15%)	1.5 to 10000 (-5 to +15%)	10-32 Tapped Hole	-60 to +250
3023A3	5 (-10 to +15%)	1.5 to 10000 (-5 to +15%)	Adhesive	-60 to +250
3023A4	5 (-10 to +15%)	1.5 to 10000 (-5 to +15%)	5-40 Tapped Hole	-60 to +250
3023A5	1 (±5%)	1.5 to 10000 (-5 to +15%)	Adhesive	-60 to +250
3023A6	5 (-10 to +15%)	1.5 to 10000 (-5 to +15%)	10-32 Tapped Hole	-60 to +250

Refer to the performance specifications of the products in this family for detailed description

Supplied Accessories:

- 1) Accredited calibration certificate (ISO 17025)
- 2) Model 6200 Mounting Stud, Quantity 1

Notes:

- [1] Measured at 100Hz, 1 Grms per ISA RP 37.2.
- [2] Measure using zero-based straight line method, % of F.S. or any lesser range.
- [3] Do not apply power to this system without current limiting, 20 mA MAX. To do so will destroy the IC charge amplifier.
- [4] In the interest of constant product improvement, we reserve the right to change specifications without notice.

PHYSICAL

	ENGLISH		SI	
Weight, Max.	0.14	oz	4.0	grams
Connector	4- PIN		4- PIN	
Mounting Provision	10-32 Tapped Hole		10-32 Tapped Hole	
Material, Housing/Connector	Titanium Alloy		Titanium Alloy	
Sensing Element	Quartz		Quartz	
Element Style	Shear		Shear	

PERFORMANCE

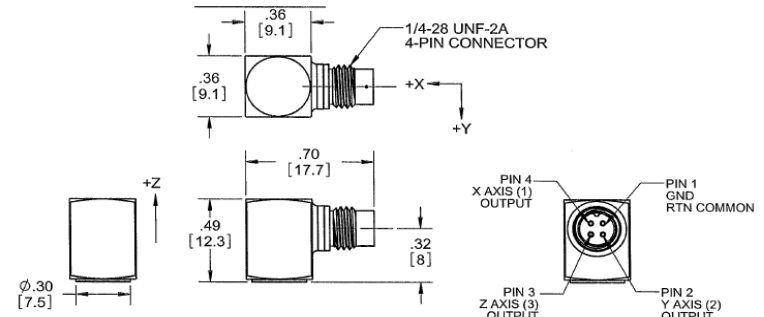
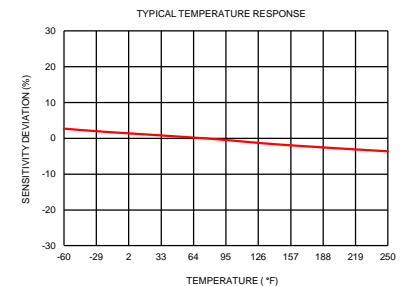
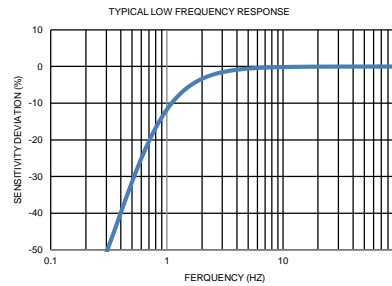
	ENGLISH		SI	
Sensitivity, ±10% [1]	1	mV/g	0.1	mV/m/s ²
Range for ± 5 Volts Output	±5000	g	±49033	m/s ²
Frequency Response	±5%	Hz	1.5 to 4000	Hz
	-5 / +15%	Hz	1.5 to 10000	Hz
Resonant Frequency	> 40	kHz	> 40	kHz
Broad Band Resolution	0.07	Grms	0.687	m/s ² rms
Spectral Noise	1.25Hz	Grms/√(Hz)	0.29	m/s ² rms/√(Hz)
	10Hz	Grms/√(Hz)	0.098	m/s ² rms/√(Hz)
	100Hz	Grms/√(Hz)	0.0196	m/s ² rms/√(Hz)
	1000Hz	Grms/√(Hz)	0.0049	m/s ² rms/√(Hz)
	10000Hz	Grms/√(Hz)	0.0039	m/s ² rms/√(Hz)
Linearity [2]	1	% F.S.	1	% F.S.
Maximum Transverse Sensitivity	6	%	6	%
Strain Sensitivity @ 250µε	0.006	g/µε	0.06	m/s ² /µε

ENVIRONMENTAL

	ENGLISH		SI	
Maximum Vibration	6000	Gpeak	58860	m/s ² peak
Maximum Shock	7000	Gpeak	68647	m/s ² peak
Temperature Range	-60 to +250	°F	-51 to +121	°C
Seal	Hermetic		Hermetic	
Magnetic Sensitivity at 100 Gauss	0.00005	g/Gauss	4.905	m/s ² /T

ELECTRICAL

	ENGLISH		SI	
Supply Current Range [3]	2 to 20	mA	2 to 20	mA
Compliance Voltage Range	18 to 30	Volts	18 to 30	Volts
Output Impedance, Typ	100	Ω	100	Ω
Bias Voltage	7 to 11	VDC	7 to 11	VDC
Discharge Time Constant	0.3 to 1.5	Sec	0.3 to 1.5	Sec
Electrical Isolation	Case Grounded	GΩ, min	Case Grounded	GΩ, min



Units on the line drawing are in inches, units in brackets are in millimeters. Refer to 127-3023A9 for more information.

