

Key Benefits of our ELSTAR Shock Test Machines

ELSTAR is a leading supplier of a series of mechanical shock testing machines, that meet the most demanding requirements. We are proud to be a manufacturer and supplier to a variety of industries since the launch of the product line in 1998. Our machines are entirely manufactured in Switzerland and represent our quality and compassion of challenges in the environment testing world.

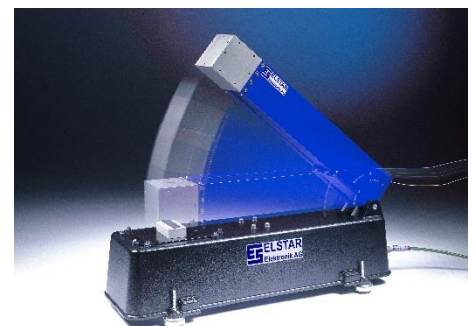
1. STM - Shock Test Machine Features

- Shock amplitude up to 2000g
- Up to ~60 accurate shocks/min
- Data acquisition with closed loop control
- Payload up to max. of 200Kg (440 Pounds)
- Clean and resonant free shocks
- Free standing machine, with own seismic mass
- CE compliance
- Optional remote control
- Compliance with all common shock standards such as EN 60068-2, MIL-STD, NIHS, DEF-STD, UN 38.3 for battery testing



2. Why is ELSTAR's STM the be solution for you

- Mounting space up to 600x800mm for DUT
- Simultaneous tests of 3 axis with the STM5
- Simple and robust machine
- Low running costs
- Only compressed air required – 6bar (86 PSI)
- After sales – remote first level support
- Worldwide service and maintenance available
- Space-saving built-in safety guard optional available



3. IMPALA2 Software / Control- and Measurement System

- Easy and user-friendly software
- Automatic amplitude control
- Time function, FFT and trend data on peak, duration, velocity
- 4 channels data acquisition
- User Access Control
- Simple test and data viewer with replay function
- Data report and export function (such as PDF and Excel)
- Simple build in Oscilloscope
- Comprehensive cursor read-outs
- Tolerance Window Monitoring.
 - User defined Tolerance Window.
 - Automatic Tolerance Zone Positioning
 - Stops the test after a defined number of shocks out of tolerance.
- Compatible with mV/g (IEPE) or pC/g (Charge) accelerometer

